

HOW CVCWA ENGAGES ON YOUR BEHALF

HELPING YOU BUILD RESILIENCY FOR YOUR REGULATORY FUTURE



DEBBIE WEBSTER, EXECUTIVE OFFICER
CENTRAL VALLEY CLEAN WATER
ASSOCIATION

CVCWA CONFERENCE
WEDNESDAY, MAY 15, 2019

WHAT IS RESILIENCY?

The capacity to recover quickly from difficulties; toughness.

The ability of a substance or object to spring back into shape; elasticity.

The capability of a strained body to recover its size and shape after deformation caused especially by compressive stress.

An ability to recover from or adjust easily to misfortune or change.

HOW DO WE BUILD RESILIENCY IN A CHANGING (REGULATORY) CLIMATE?

One Water	Recycled water	Toxicity	CV-SALTS	SGMA	Climate change
ELAP	Monitoring	SSS WDR	Biosolids	Nutrients	Qualified Staff
Reasonable rates	Regional Systems	Enforcement	Funding	Air	Compliance
	Permitting	CEC's	Governing Boards	Fines/Lawsuits	

CVCWA's mission is to **effectively represent** the interests of wastewater agencies in the Central Valley in regulatory matters and to **support the exchange of information** so members can best meet their business challenges.

CVCWA's intent is to approach inland surface water discharge and land application regulatory matters with a perspective that balances environmental and economic interest and to **speak with a unified voice** from its members and partnering organizations. Our goal is to assure that regulatory actions are **protective of the environment**, are based on **sound scientific information**, and reflect a **fair and reasonable economic basis**.



CVCWA'S ENGAGEMENT

- **EFFECTIVELY REPRESENT**

- ENGAGE IN REGULATORY MATTERS AT THE REGIONAL AND STATEWIDE LEVEL

- **SUPPORT THE EXCHANGE OF INFORMATION**

- COMMITTEES AND WORKGROUPS
- WORKSHOPS/CONFERENCE/OUTREACH
- EMAIL AND OTHER MESSAGING



- **SPEAK WITH A UNIFIED VOICE**

- COLLABORATE WITHIN AND WITH OTHER STAKEHOLDERS

- **ENVIRONMENTAL PROTECTION ↔ SOUND SCIENCE ↔ FAIR ECONOMICS**

- FURTHER SCIENCE (SPECIAL PROJECTS)
- ENVIRONMENTAL BENEFIT CONSIDERING COST

OUTLINE

Regional Highlights

Statewide Highlights

Becoming more engaged in CVCWA

REGIONAL: CV-SALTS

- FOCUS:
 - SALT – SURFACE & GROUND
 - NITRATE – GROUNDWATER BASINS*
- IMPACT ALL POTWS IN THE CENTRAL VALLEY
- MULTI-YEAR, MULTI-STAKEHOLDER EFFORT



SALT & NITRATE CONTROL PROGRAM BASED ON THREE MANAGEMENT GOALS

Management Goal 1

- Safe Drinking Water Supply
 - Short & Long Term Solutions



Management Goal 2

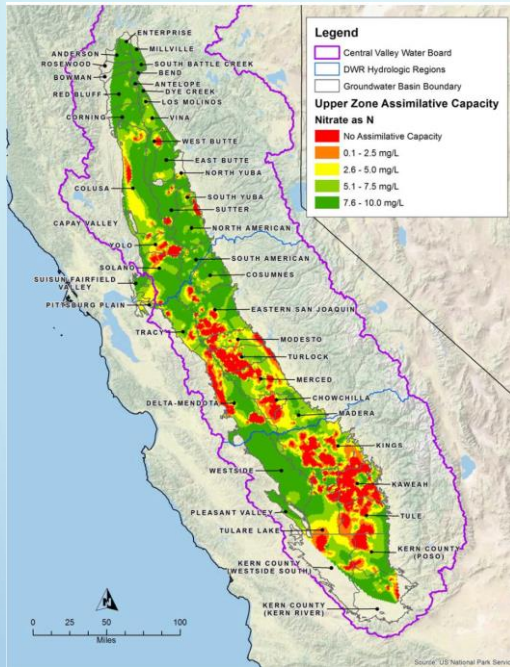
- Balanced Salt & Nitrate Loadings
 - Ongoing and Expanding Efforts



Management Goal 3

- Implement Long-term Managed Aquifer Restoration
 - Where Reasonable, Feasible & Practicable

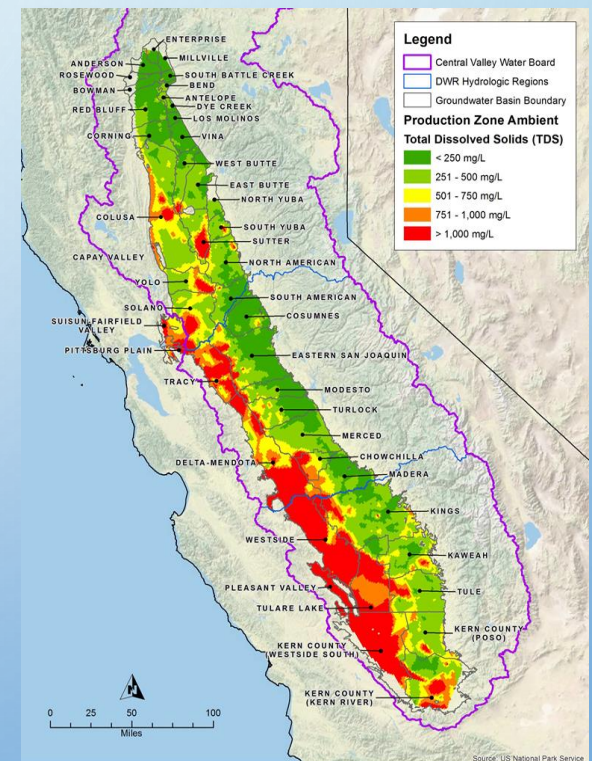
NITRATE



NITRATE ABOVE THE MCL

- PEOPLE IN THE CENTRAL VALLEY ARE DEPENDENT ON GROUNDWATER WELLS WHICH DO NOT MEET THE MCL FOR NITRATE IN DRINKING WATER.
- DOMESTIC WELLS

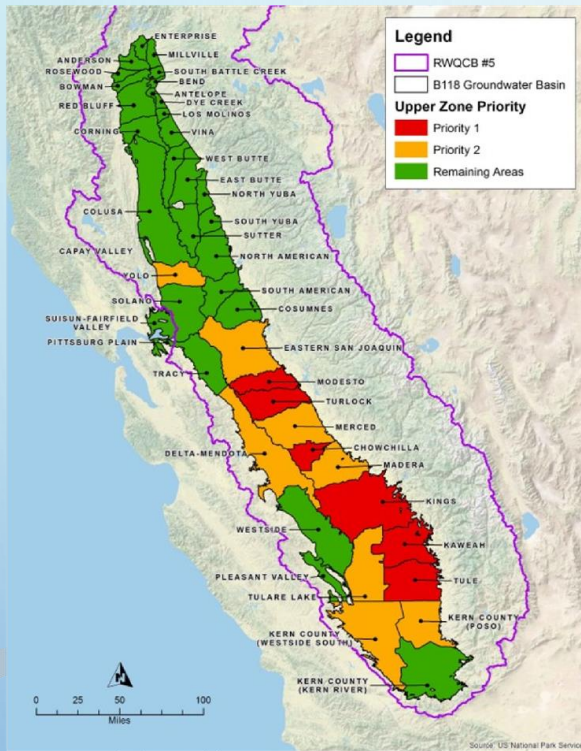
SALT (TDS)



SALT IS ACCUMULATING

- 15.5 MILLION TONS OF SALT ARE BROUGHT INTO OR MOBILIZED INTO THE VALLEY EACH YEAR
- COST IS ANTICIPATED TO BE OVER \$500 MILLION/YR. TO BOTH AGRICULTURE AND INFRASTRUCTURE.

NITRATE PERMITTING



- Prioritized Program
- Individual and Collaborative (Management Zones) Permitting Approach
 - Greater Flexibility through Collaboration
- Early Action Plans in Impacted Areas required.
- Two “test” management zones

TABLE N-1: PRIORITIZED DWR BULLETIN 118 GROUNDWATER BASINS/SUBBASINS

PRIORITY 1		PRIORITY 2	
5-22.11	Kaweah	5-21.67	Yolo
5-22.03	Turlock	5-22.04	Merced
5-22.05	Chowchilla	5-22.14	Kern County (Westside South)
5-22.13	Tule	5-22.12	Tulare Lake
5-22.02	Modesto	5-22.14	Kern County (Poso)
5-22.08	Kings	5-22.07	Delta Mendota
		5-22.01	Eastern San Joaquin
		5-22.06	Madera

SALINITY PERMITTING

Phased, Central Valley Wide Program
Permitting Options: Conservative & Alternative
All Sources Involved

Phase 1:

Prioritization/Optimization Study

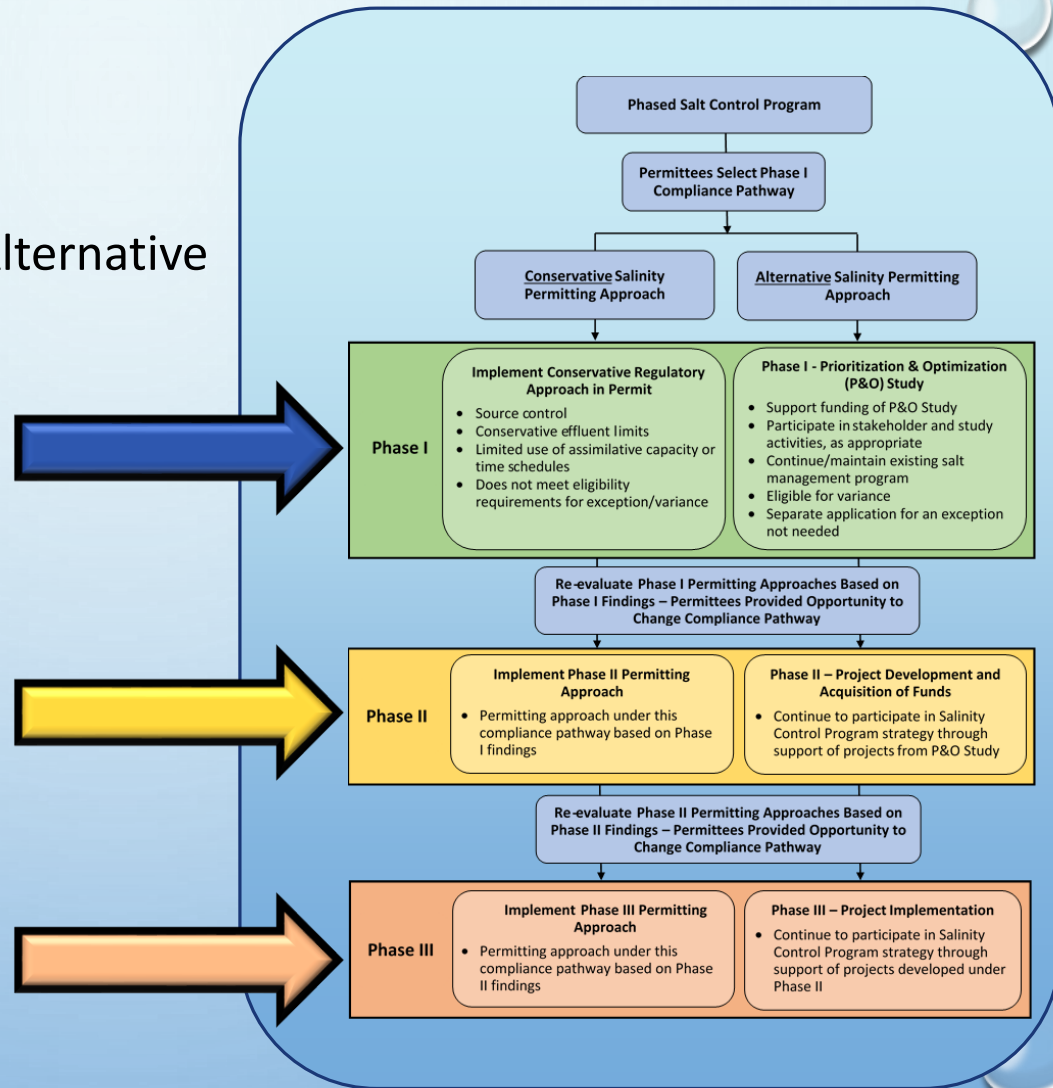
- *Expanded Evaluations*
- *Physical/Non-Physical Projects*
- *Governance/Funding*

Phase 2: Project Development

- *Funding/Permits/Non-Physical Projects*

Phase 3: Project Implementation

- *Construction*



ADDITIONAL TOOLS IN CV-SALTS

- VARIANCE POLICY
- EXCEPTIONS POLICY
- DROUGHT AND CONSERVATION POLICY
- OFFSETS POLICY
- IMPLEMENTATION OF SECONDARY MCLS



→ **Collaborative Compliance**

- Will be at a cost – P&O Study, Management Zones, Surveillance & Monitoring Program (SAMP)
- The collaborative compliance approach will be more cost effective for most
- Stay tuned for CV-SALTS workshops in Fall 2019

CV-SALTS TIMELINE

SWB Approval – Summer 2019?

CVCWA/RWB CV-SALTS Permitting outreach – Late Summer/Fall 2019

AOL Approval – Late Summer/Fall 2019

USEPA – 2020 (Surface Water Components Only)

Implementation Starting Late 2019-Early 2020

- Nitrate Priority 1 Basins by 2020
- Nitrate Priority 2 Basins by 2025

Salinity Phase 1 (P&O) by 2020 → 10-year



CV-SALTS SPECIAL PROJECT

- FUNDS CVCWA'S PARTICIPATION IN CV-SALTS
- "CREDIT" FOR PARTICIPATION IN CV-SALTS
- CVCWA CV-SALTS WORKGROUP

DEVELOPING SCIENCE FOR REGULATORY DECISIONS – SPECIAL PROJECTS

FRESHWATER MUSSELS

- AMMONIA CRITERIA PROTECTIVE OF NATIVE CALIFORNIA MUSSELS, ENVIRONMENTAL DNA SAMPLING
- 42 PARTICIPATING AGENCIES
- FIVE YEAR PROCESS



METHYLMERCURY

- EVALUATION OF EFFECTIVE TECHNOLOGIES FOR METHYLMERCURY TREATMENT IN WASTEWATER
- 15 PARTICIPATING AGENCIES
- 7 YEAR PROCESS

TOXICITY

- 17 PARTICIPATING AGENCIES
- 1ST PHASE COMPLETE (2-YRS)
- INFORM POLICY AND COMPLIANCE OPTIONS
- STATE POLICY IN SUMMER??



PERMIT/REGULATORY ADVOCACY SP

- 7 AGENCIES PARTICIPATE
- PROVIDES LEGAL AND TECHNICAL
 - PERMIT AND POLICY REVIEW
 - COMMENT LETTERS
 - INITIATIVES
- FOCUS ON COST EFFECTIVE, REASONABLE REGULATIONS WITH ENVIRONMENTAL BENEFITS
- CVCWA AS A PARTNER AND RESOURCE



WATER BOARD PERMITTING ACTIONS

- **NPDES NO-DILUTION (ADOPTED)**
- **WDR FOR >100,000 GALLONS PER DAY (GPD)**
- **ENFORCEMENT AND CIWQS ISSUES**
- **IMPLEMENTATION FOR NEW PROGRAMS**
- **TOXICITY NUMERIC LIMITS**

DELTA RMP AND DELTA NUTRIENTS



Delta RMP

- Pesticides
- Nutrients
- Mercury
- Pathogens (complete)
- CECs (New)

Delta Nutrients

- Cyanobacteria
- Macrophyte
- Forms & Ratios
- Drinking Water
- Modeling



STATE WATER BOARD

RECENTLY ADOPTED

- RECYCLED WATER POLICY UPDATE
- LOWER SAN JOAQUIN RIVER FLOWS & BAY DELTA SALINITY STANDARDS (OAL 2/25/19)
- BACTERIA
- PFAS
- SEDIMENT QUALITY OBJECTIVES
- DREDGE & FILL POLICY (WATERS OF THE STATE)



SWB – IN PROGRESS

- STATEWIDE SANITARY SEWER SYSTEM WASTE DISCHARGE REQUIREMENTS (SSS WDR) – WINTER 2019/20
- STATEWIDE TOXICITY PROVISIONS
- BIOSTIMULATORY AND BIOINTEGRITY POLICY
- ELAP ACCREDITATION REGULATIONS
- HUMAN RIGHT TO WATER IMPLEMENTATION
- CLIMATE CHANGE IMPLEMENTATION
- REVISED TOTAL COLIFORM RULE (SUMMER 2019)
- BAY-DELTA INTERIOR FLOWS (WINTER 2019)



HOW TO ENGAGE WITH CVCWA

- BECOME A MEMBER
- JOIN OR UPDATE INFO ON THE EMAIL LIST
- ATTEND CONFERENCES AND WORKSHOPS
- JOIN A COMMITTEE/WORKGROUP
 - LABORATORY (ELAP)
 - COLLECTIONS (SSS WDR – CLIMATE)
 - CV-SALTS (P&O STUDY COST AND SCOPE, OUTREACH)
 - WATER (TOXICITY)
 - AIR -CLIMATE CHANGE (CLIMATE CHANGE RESILIENCY)
 - GROUNDWATER/LAND DISCHARGE (GENERAL WDR WHEN > 100K GPD)
 - BIOSOLIDS
- FUND & PARTICIPATE IN SPECIAL PROJECTS
- SERVE ON THE CVCWA BOARD OR PARTICIPATE IN MEETINGS



CVCWA



CENTRAL VALLEY CLEAN WATER ASSOCIATION

700 R STREET, SUITE 200

SACRAMENTO, CA 95811

(916) 330-2705 (MAIN)

WWW.CVCWA.ORG

DEBBIE WEBSTER, EXECUTIVE OFFICER

(530) 268-1338

EOFFICER@CVCWA.ORG



SARAH ERCK, ADMINISTRATIVE DIRECTOR

(916) 330-2705

SERCK@CVCWA.ORG